



Calendar of Events

December, 2008

6	Honors Auditions and Bartok/Contemporary Music Festival
----------	--

February, 2009

6-8	CAPMT Conference San Mateo, CA
------------	-----------------------------------

CAPMT Piano Auditions

2008-2009

Submitted by Young Robbins, Event Chair

CAPMT District I Piano Auditions were held on Saturday, November 8, 2008 at the Piano Warehouse in San Marcos. The evaluator was Dr. Judy Huang. We appreciate her for sharing her expertise with our students.

Thank you again to all the teachers for entering your students and for your help in facilitating this event!! Also, thanks to Sarah J. Bishop from Pt. Loma Nazarene University, Student Chapter, for assisting with our event.

Students who received the top "5" rating are invited to perform at the CAPMT Southern Divisions Piano and Ensemble Festival State Recital Program which will be held on January 31, 2009 at Whittier College. Detailed information will be forthcoming from the State Chair.

Congratulations to all the selected performers on their accomplishment.

**STUDENTS RECEIVING
A TOP "5" RATING**

CATEGORY	STUDENT	TEACHERS
2	Tiffany Phan Kristi Le Martin Maghiar Lauren Scheg	Rowena Asuncion Criseida Werdenberg
3	Reid Ponder	Criseida Werdenberg
5	Jordan Linden	Criseida Werdenberg
6	Paul Maxwell Scott Greenstone Sarah Yoder	Annette Phillips
7	Christina Oh	Young Robbins

Remembering Chuck Showalter

Charles Showalter, longtime member of MTNA/CAPMT District I, passed away on Sunday, November 2, 2008. Chuck was born in Orange, CA on December 11, 1946 and was raised in Garden Grove. He began playing classical piano at age three and was a member of The Spats from 1965 - 1970.

Spats was a seven piece musical group consisting of harmonica, bass, rhythm and lead guitars, sax, drums, and piano/organ. Chuck, known as



“the handsome Spat” because of his thick, wavy brown hair, dark complexion, and baby blue eyes, was the group’s musical director, pianist, and organist. The group performed with and/or opened for well-known artists such as Sonny and Cher, the Rolling Stones, Peter and Gordon, Gary Lewis, Danny Thomas, Dick Clark, and Pat Boone. In the 1970's, Chuck embarked on a solo career.

In recent years, Chuck’s contribution to CAPMT District I was invaluable as he served for many years as chair for Spring Festival and entered well-taught students into various competitions.

Condolences may be sent to Chuck’s family at the following address:

Ellie Showalter
636 Rockledge
Oceanside, CA 92054



Chuck Showalter with student at CAPMT District I Piano Auditions in 2006.

2008 Ensemble Auditions

Submitted by Timothy Broadway, Event Chair

The District I Ensemble Auditions were held on Sunday, October 26, 2008 at PianoSD.com. There were 76 participants. The evaluators were Connie Almond and Audrey Grigsby.

The following ensembles were given the top rating of "5":

Elementary Division	Students		Teacher
Cello Duet	Erik Schrunk, cello	Brigitte Schrunk, cello	Lu-Yan Guo
One Piano, Four Hands	Russel Chiang, piano Isaac Che, piano		Anna Stal
Intermediate Division	Students		Teacher
One Piano, Four Hands	Ivy Huang, piano Laura Zhu, piano		Tatiana Stignev
Advanced Division	Students		Teacher
String Ensemble	Elijah Grote, cello Sandra Dai, cello James Schwend, cello Dylan Khor, cello Emily Balderrama, cello Charlotte Chiu, cello Nathan Mull, cello Kendra Yin, cello Paul Maxwell, cello Iris Peng, cello	Eric Schrunk, cello Brigitte Schrunk, cello Yvonne Li, cello Lauren Wang, cello Elvis Kim, cello Kevin Chen, violin Flora Li, violin Ian Lim, viola Imad Pasha, viola	Lu-Yan Guo
One Piano, Four Hands	Elton Yu, piano Michael Wu		Tatiana Stignev
Two Pianos, Eight Hands	Janan Chow, piano Christine Li, piano Nathan Lien, piano Ivan Maric, piano		Tatiana Stignev

Photos of this event may be viewed at the following website:

http://www.kodakgallery.com/ShareLanding.action?c=enqq965.2btv7jt&x=0&y=xg253&localeid=en_US

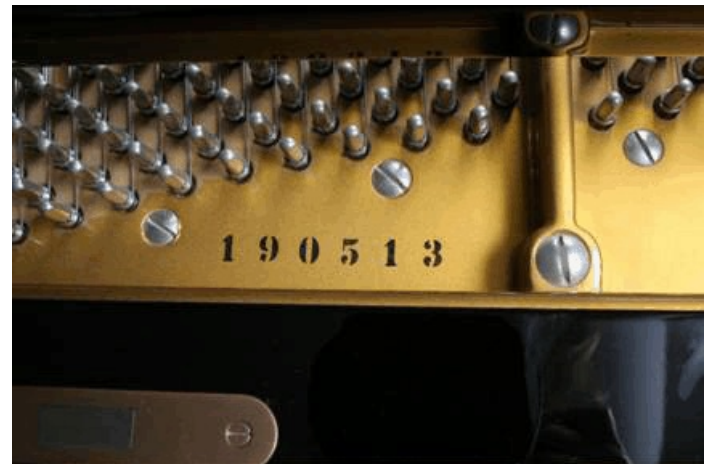
Piano For Sale:

C. Bechstein Grand Piano, Model M/P 192

Submitted by Tim Broadway

The M/P 192 is a small grand with “large” capabilities that offer the ultimate in musical interpretation. Characterized by a wide color spectrum, full bass, singing treble, impeccable register transitions, and a professional playing action, the M/P 192 is a powerful and lyrical world-class piano that will surpass expectations of even the most discerning music connoisseur.

This extraordinary piano, from the concert series Bechstein, is in a size for your home or studio. Five years old, perfectly maintained with an exceptionally beautiful tone. Priced at \$79,900, this piano, brand new, would be \$98,000. Please contact Tim Broadway at (619) 542-0120 or piano@timbroadway.com



Page five

Executive Board & Event Chairs**District Coordinator**

Kathleen Kranz
(619) 280-5601
drkathleenkranz@yahoo.com

Treasurer

Ramona Saunders
(760) 639-0694
music.mama@juno.com

Secretary

Leslie Olson
(619) 660-6685
lesliemusc@cox.net

Membership Chair and Referral Phone

Fresas Flores Balistreri
(619) 244-2058
fresasf@yahoo.com

Certification

Susan Fee
(619) 295-0167
sdfee@cox.net

Newsletter Editor

Ramona Saunders
(760) 639-0694
music.mama@juno.com

Newsletter Designer

Katie Saunders/Ramona
Saunders
(760) 639-0694
music.mama@juno.com

Ensemble Auditions

Tim Broadway
(619) 542-0120
piano@timbroadway.com

Piano Auditions

Young Robbins
(760) 721-0575
YLRobbins@hotmail.com

Media Relations

Janet Tooby
(760) 632-2469
jmtooby@yahoo.com

Honors Auditions

Susan Fee
(619) 295-0167
sdfee@cox.net

Bartok Festival

George Fee
(619) 295-0167
sdfee@cox.net

Southern California**Festival of the Arts (SCFA)**

Young Robbins - Event Chair
(760) 721-0575
YLRobbins@hotmail.com

1759 Hummingbird Lane
Vista, California 92084-3612

**C
A
P
M
T**